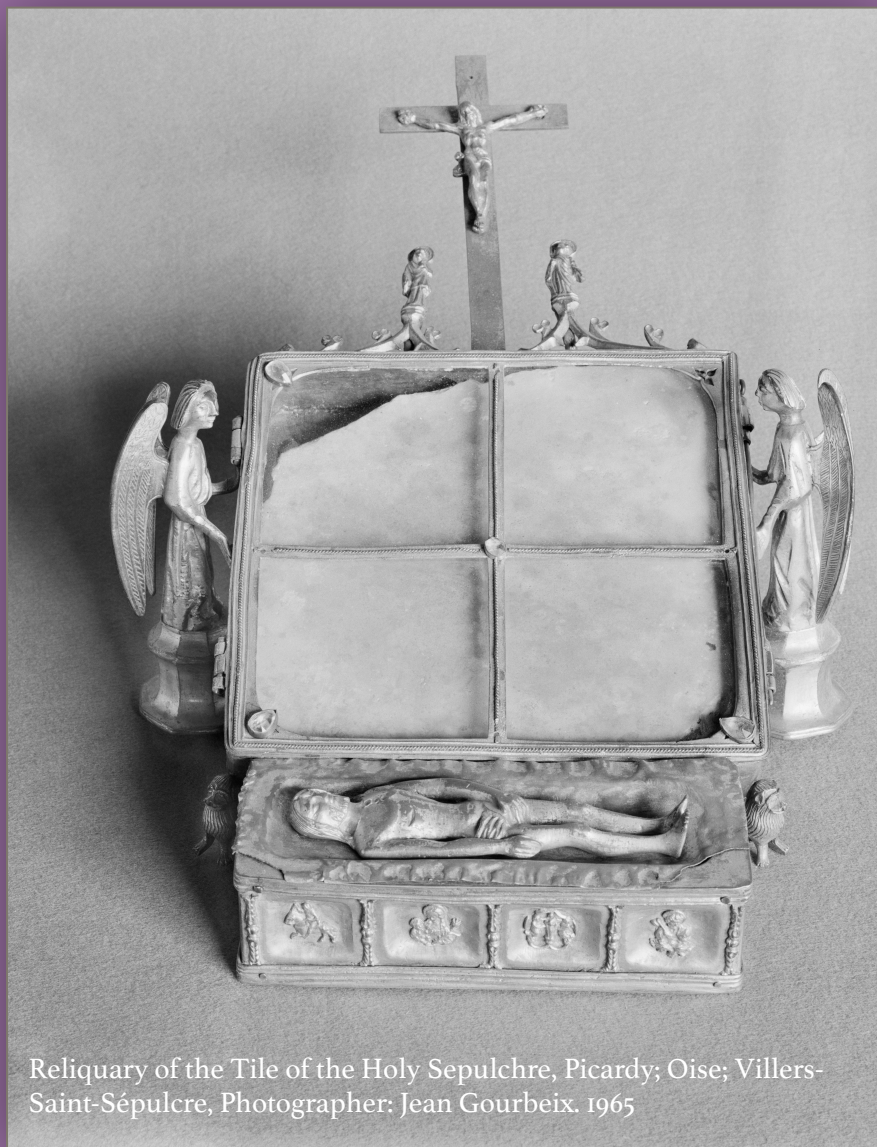




Tulane University School of Liberal Arts & the Newcomb Art Department present

Relics of Place: Stone Fragments of the Holy Sepulchre in Eleventh-Century France



Reliquary of the Tile of the Holy Sepulchre, Picardy; Oise; Villers-Saint-Sépulcre, Photographer: Jean Gourbeix. 1965

a lecture by

Renana Bartal

Professor of Art History, Tel Aviv University

Friday, October 25, 6 pm

210 Woldenberg Art Center

Supported by the Center for Scholars, Medieval and Early Modern Studies,
and CELT (Center for Engaged Learning and Teaching)